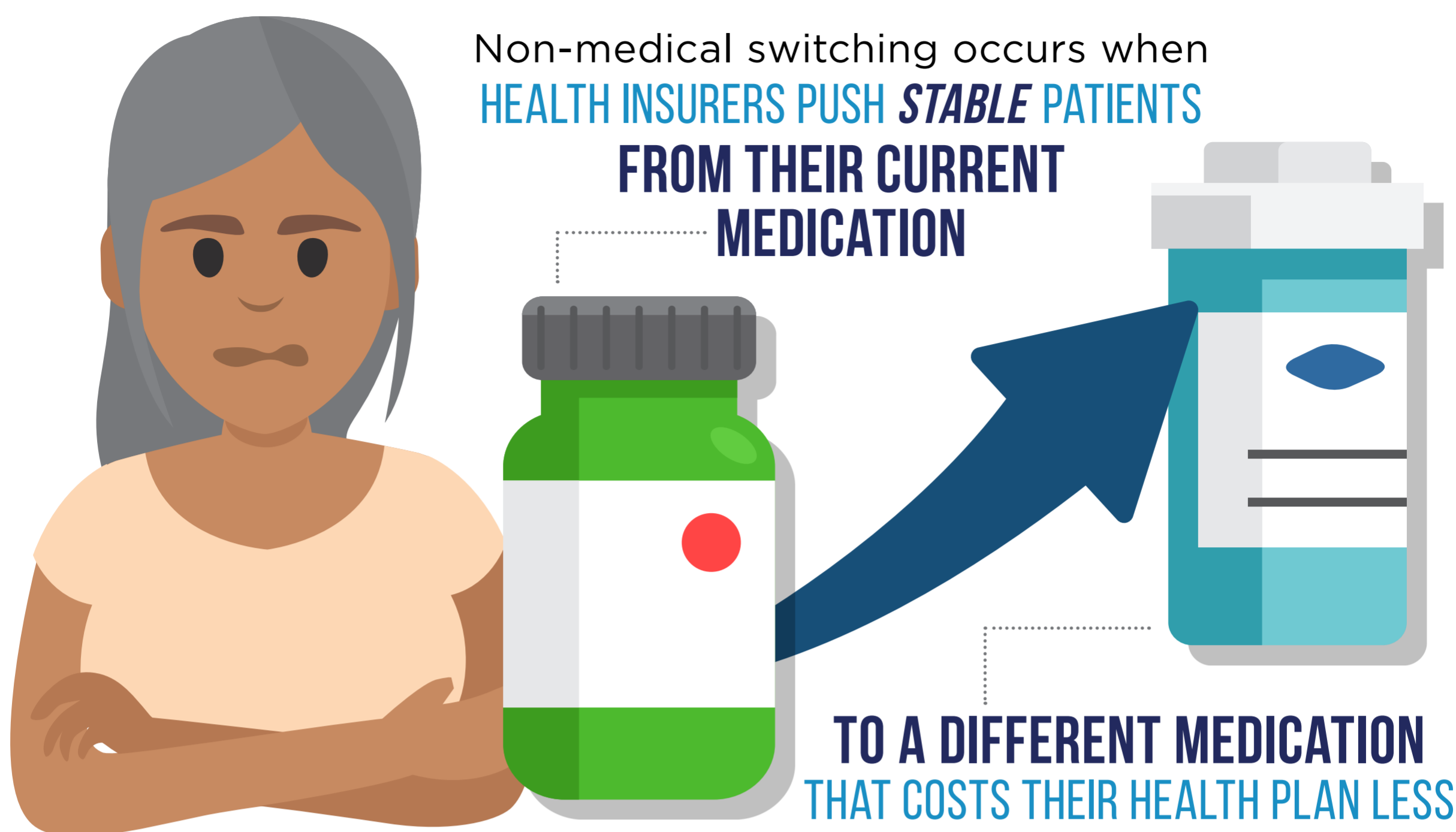


HOW NON-MEDICAL SWITCHING HURTS PATIENTS

Non-medical switching occurs when **HEALTH INSURERS PUSH STABLE PATIENTS FROM THEIR CURRENT MEDICATION**



A national study shows it can **HURT NEARLY EVERY ASPECT** of patients' lives:

HEALTH

Patients reported:



60% Side Effects

72% Re-Emerging Symptoms

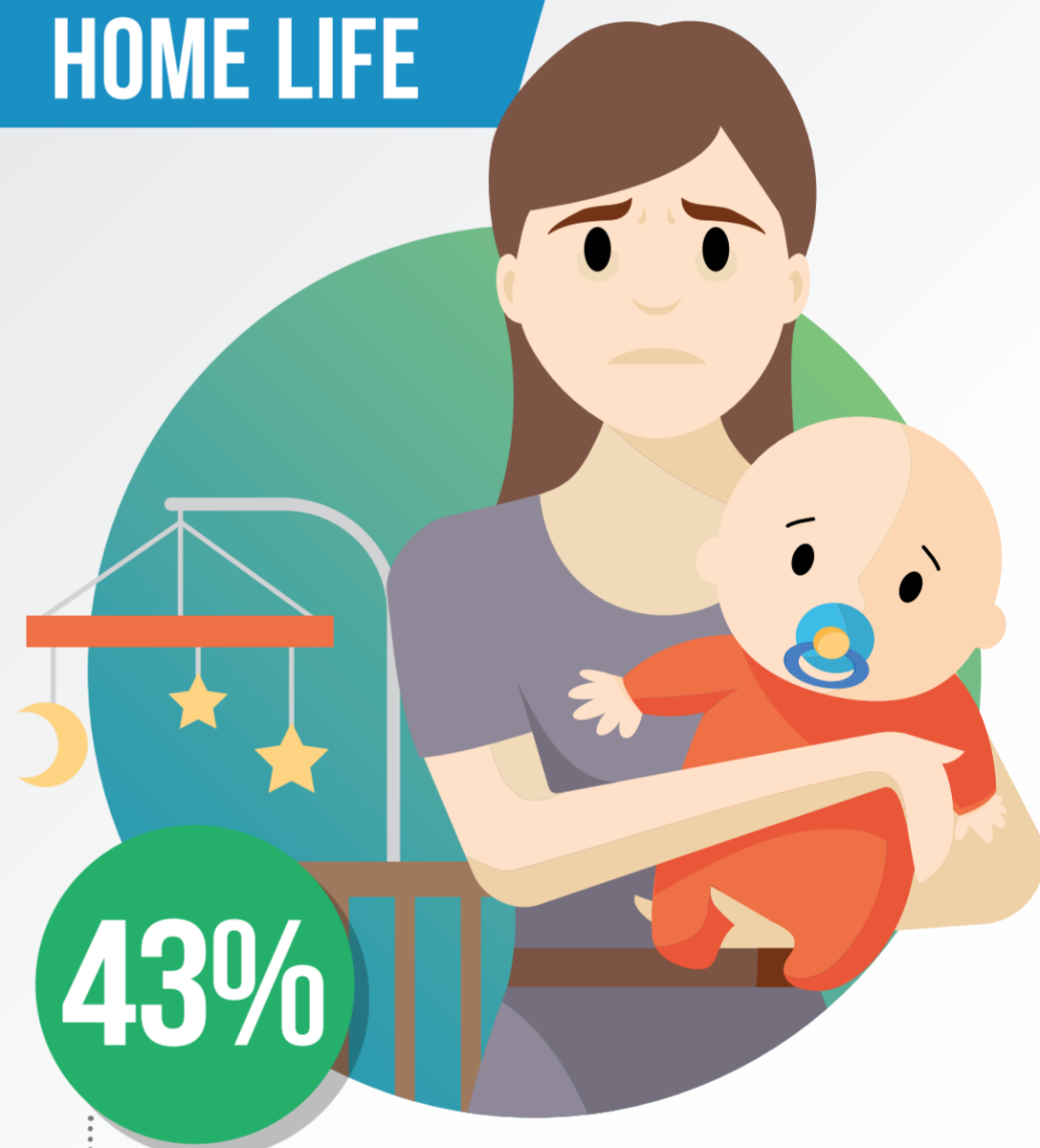


NEARLY 1 IN 10 Were Hospitalized



ABOUT 40% Stopped taking their medicine altogether

HOME LIFE



“I wasn’t able to care for my children, grandchildren, spouse, parents or other family members.”

WORK LIFE



“My ability to focus or be productive at work was impacted.”

EMOTIONAL WELL-BEING

Patients reported that the **SWITCH LEFT THEM FEELING:**



83% FRUSTRATED



72% CONFUSED



70% HELPLESS

PATIENTS DESERVE BETTER THAN NON-MEDICAL SWITCHING



Alliance for Patient Access

AllianceforPatientAccess.org